

Schoodic Byway
12/10/2012
Sullivan Town Office
Minute

Introductions

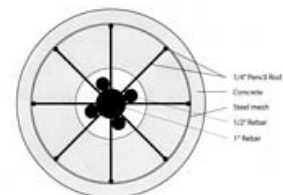
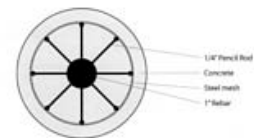
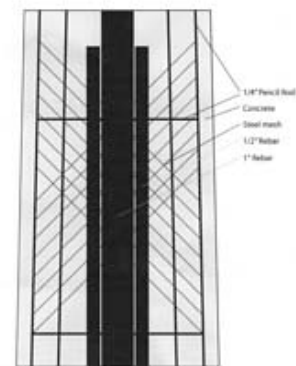
Attending: Barbara Shanahan, Eve Wilkins, Thomas Sidar, Peter Drinkwater, Barbara Bowen, Dick Fisher, Phid Lawless, Larry Johannesman, Fred Michaud, Ruth Franzius, Rod Franzius. Jim Fisher

November Minutes approved – as read

Kids Quest

Long Cove Wooly Mammoth

- Might usually make this out of fiberglass
- Lunaform – difficult to build with cement
 - o One staffer has
 - o Shop height 10'
 - o Requires substantial steel armature – 1 1/4" rebar
 - o 1/4" spokes emanating out every foot
 - o 1/4" bar verticals
 - o Press concrete into the frame
 - o Concrete can be sealed, making it possible to clean graffiti – needs to be resealed every five years or so.
 - o Color might be ivory
- Fiberglass option
 - o Doesn't feel as realistic
 - o Might use a carved foam core and layers of resin and spandex
 - o Could contact a boat builder
- Question of the alignment
 - o Vertical v. horizontal – might be horizontal
 - o Position relative to the feet
- Price
 - o \$3,000 per tusk
 - o Will see what funds can be allocated to the tusks
- Larry Johannesman – Arrived just as Phid Lawless was leaving
 - o Alternative site design
 - o Footprints lead up to the small bluff
 - o Tusk is on one side of entrance
 - o Might use one tusk – half the cost



- Rebuilt the wall seven years ago
- But not going to hold
- Engineers concerned about deteriorating cribwork and tidal currents
- Best view is from the building, but the buildings cut off the view from the park
- Events
 - Summer concert series
 - Host FBC and Hancock Women's Clubs fundraisers every year
- Alternative development scenarios
 - Held a facilitated focus group
 - Hired Coplon Associates for preliminary concepts
 - Site plan A
 - Renovate privy and pavilion
 - Replace seawall
 - Remove and rebuild main building
 - Move parking back
 - Site plan B
 - Remove building
 - Rebuild wall and viewing platform
 - New parking area with building
 - Site Plan C
 - Build building in privy site
 - Site Plan D
 - Move office closer to the property line
 - Site Plan E
 - Move building off site
 - Renovate pavilion
 - Replace the seawall
- Do not have adequate interpretive displays now
 - The current tidal falls sign is one of the first things people see
 - Not enough information on how tides occur
 - Not enough information on wildlife – eider ducks
- Next steps
 - Would make sense to have the master plan – builder sketches for the final design options- will require board approval
 - Capital Campaign -
 - Build out
 - Should this group
- Byway Options
 - No project here
 - Add a second interpretive panel explaining the tides – separate grant (2011)
 - There are precise models of the bottom of the channel
 - Kids interactive box with fluid dynamics kids quest – (2012)

- Might put a tidal demonstration at Gordon's Wharf
 -
 - Archeological evidence?
 - Red Pain People
 - Wildlife interpretation
- Moving forward
 - Larry – suggest the committee prepare some ideas
 - Thomas can present them to the board of directors for their comments

Taunton Bay Gateway

- Rail tracks – Downeast Rail Heritage Trust
 - Able to install a short section of track
 - Might be able to add switching equipment – example
 - Find out about switching equipment
- Swinging Bridge engine
 - Kids could through the forward – reverse lever
 - Big iron girder by the town office
- Hancock
 - Would like a new welcome sign at the west end of the turnout

Gordon's Wharf

- Granite cutting
 - Steve Perrin has created informational concepts
 - Might have a derrick that kids can operate
 - Crank operator
 - Have a number of worked pieces of granite
 - Progression from rock to table top
 - Cobblestone flooring
 - Track road with gravity powered rail
 -
 - Separate panel for bay ecology
 -
- Lobster Fishing
 - Gary spoke with a local lobster trap maker
 - Large traps concept – problematic would not be safe or function
 - Current large trap is 4" long
 - Make it strong enough for kids to climb on top
 - Other builders might go larger

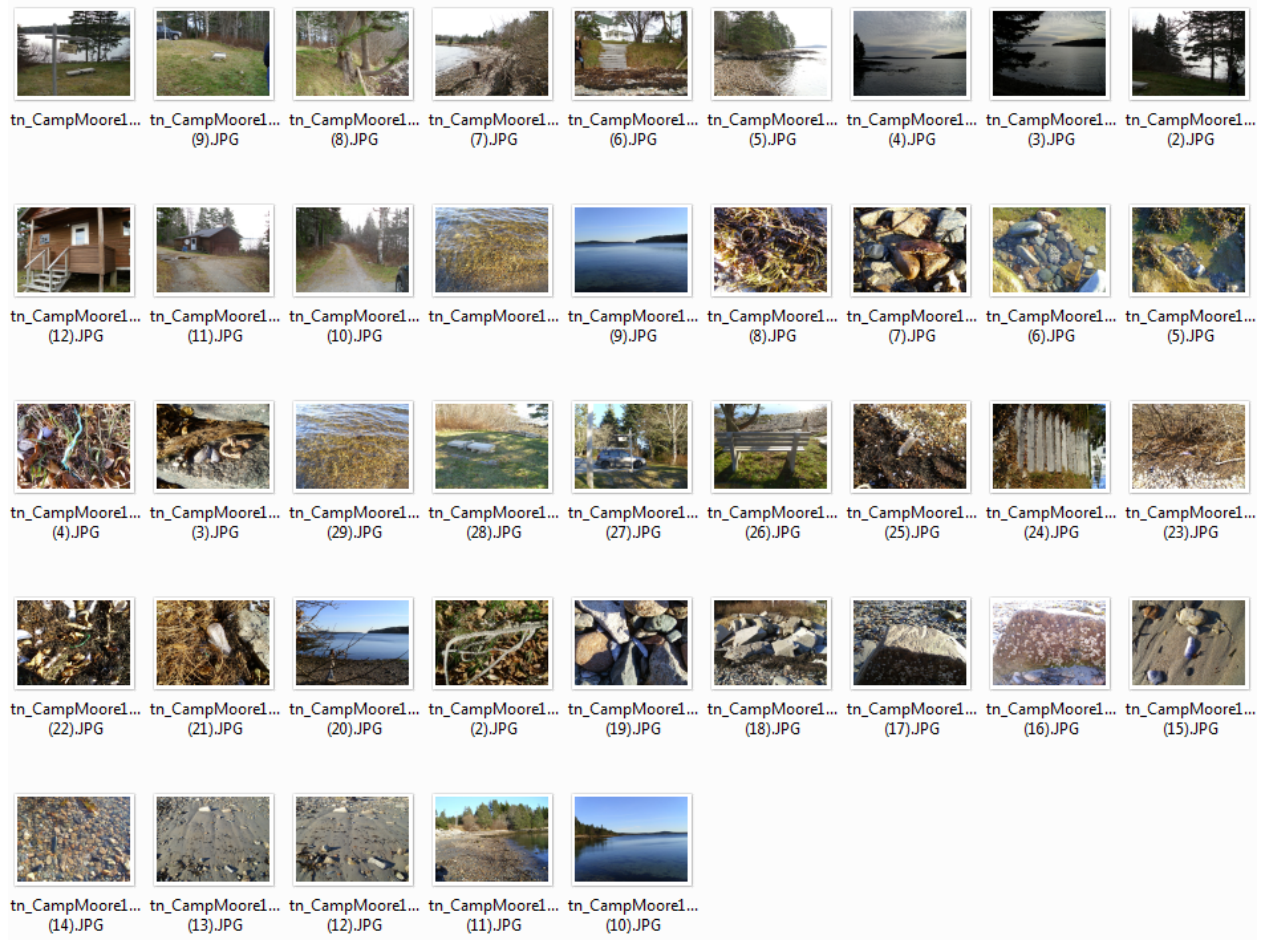
Frenchman Bay Turnout

- Binoculars
 - HCPC will purchase with MaineDOT approval

- Design will be for kids ages 4 to 11 and will be accessible for wheelchairs
- Kids quest logo would be included (as in all sites)

Winter Harbor

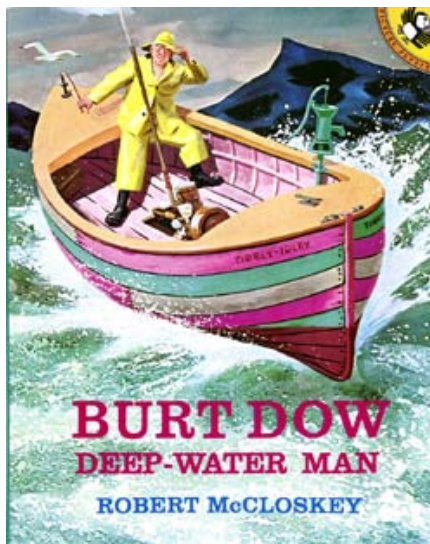
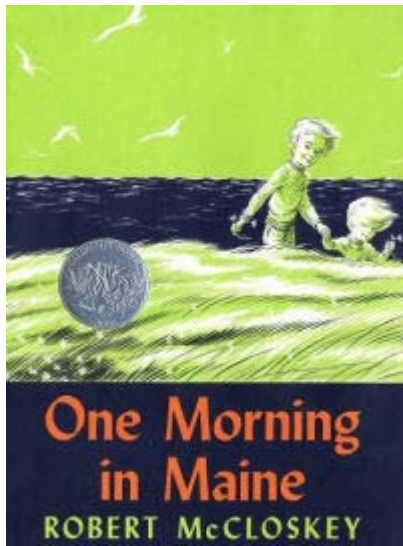
- Camp Moore
- Theme: **What's Natural – What's Not**
- Story board on bay ecology, litter and wildlife
- Slide show of things to see on the beach



Prospect Harbor

- Dick, Barbara, Eve and Dean Katula met at the site
- Larry created a sketch of the site
- Clean up some of the weeds in the gully, but keep some in place
- Bridge – crossing the gully
 - Gangway or wharf
 - Jim – finish the concept
 - Larry – I-Beams from MaineDOT Bridge lot
 - Eve can look for materials - donations

- o Local lumber yard – has hemlock
- Lobster boat – contributed labor



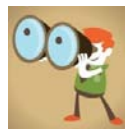
Story board

- o Robert McCloskey style morning in Maine
- o Fishermen paddling out to their boat
- o Pulling traps
- o Buoys
- o Navigation
 - Donated compass
 - Lighthouse
- o Lobsters
 - Life cycle
 - a business near Barbara has a model lobster
 - Dean Katula has a model lobster
 - Conservation Size / v-notch
 - Trapping
- o Three teachers at Peninsula School – volunteered to assist with
- Other partners
 - o Brian Beal – Downeast Institute on Great Wass Island
 - o Lobster Institute
 - Herbie Hodgkins resident of Hancock
 - o Portland – museum



Kids Quest Logo

- Magnifying glass
- Child
- Exploration



Interpretive Program

MAP – 21

- Still no plan for RFP that would work for byways
- Applicants would probably be towns- applying for a number of different facilities including bikeways, trails, scenic turnouts, environmental mitigation, etc.

EMDC is working on a proposal for interpretive infrastructure through the Rural Business Enterprise Grant

- Gary is familiar with this program

Byway Funds

- Maine Office of Tourism –
 - o Native American Theme
 - o Might have two coastal and two interior byways
 - Bold Coast and Schoodic as possible coastal byways
- Arts Theme
 - o Quimby Family Foundation - Might be funneled through Schoodic Arts for All

Bond Funding

- Current bond is not being released now
- MaineDOT is focused on paving

National Beauty of the Byways – National Quilting Exposition

- Corea Grange has a quilting
- Rosemary Levin – Chapter 2 – may be interested
- Jim will forward the email about this event to others on the committee

Next Meeting: January - TBA